

MONTHLY MEMBERSHIP PROGRESS REPORT

District 325 F

Results as of: 6/30/2024

GMT:

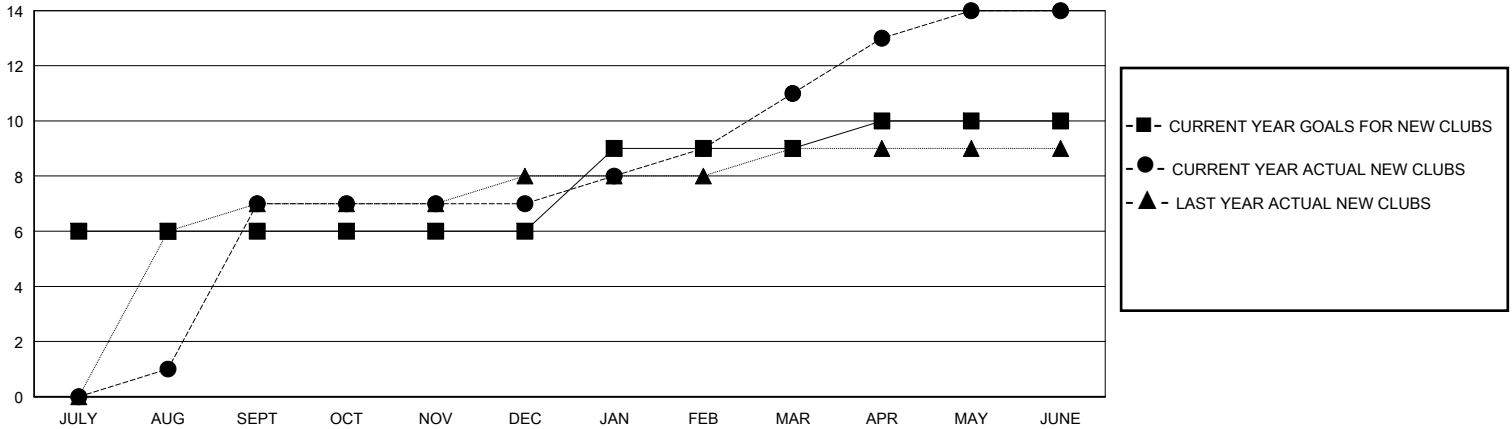
LOCATION NEPAL

GMT CA

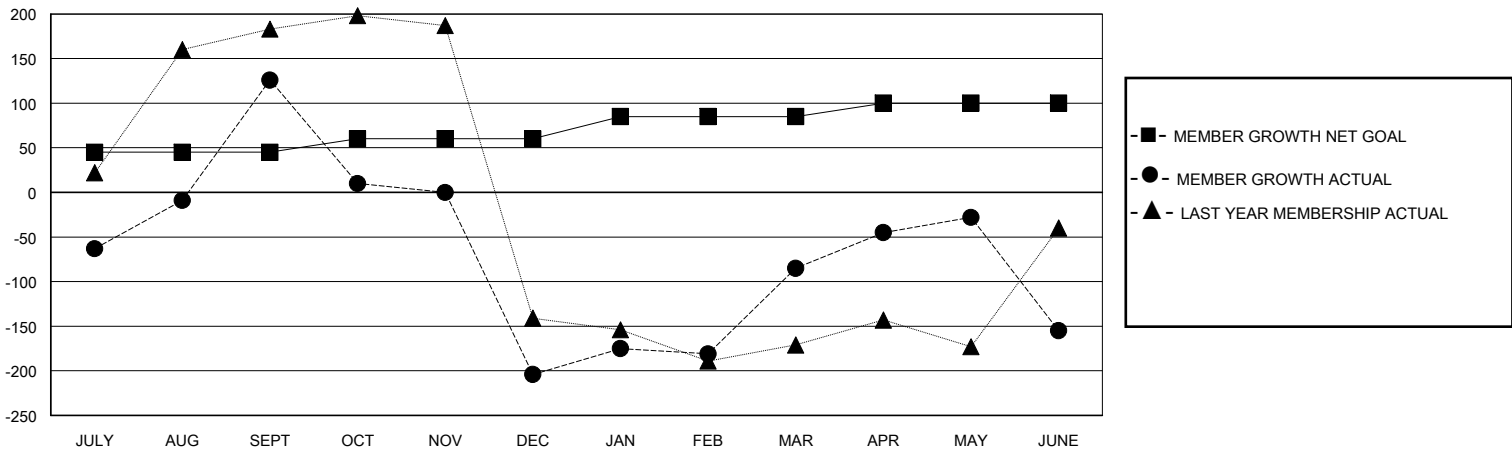
| Clubs | | | |
|-----------------------|---------------|-----------|---------------|
| RESULTS FOR 2023-2024 | | | |
| QUARTER | NEW CLUB GOAL | NEW CLUBS | DROPPED CLUBS |
| JULY/AUG/SEPT | 6 | 7 | 0 |
| OCT/NOV/DEC | 0 | 0 | 5 |
| JAN/FEB/MAR | 3 | 4 | 3 |
| APR/MAY/JUNE | 1 | 3 | 5 |

| Members | | | |
|-----------------------|------------------------|----------------------|--|
| RESULTS FOR 2023-2024 | | | |
| QUARTER | MEMBER GROWTH NET GOAL | MEMBER GROWTH ACTUAL | DROPPED MEMBERS ACTUAL (including transfers) |
| JULY/AUG/SEPT | 45 | 331 | 197 |
| OCT/NOV/DEC | 15 | 72 | 399 |
| JAN/FEB/MAR | 25 | 220 | 89 |
| APR/MAY/JUNE | 15 | 308 | 344 |

GOALS AND ACTUAL NEW CLUBS CUMULATIVE



GOALS AND ACTUAL MEMBERS CUMULATIVE



| | |
|------------------------|--------------|
| DROPPED CLUBS: 13 | |
| DROPPED MEMBERS | |
| DECEASED | 3 |
| CLUB CANCELLED | 126 |
| OTHER | 900 |
| TOTAL | 1,029 |

86 CLUBS OF 119 ADDED 1 OR MORE NEW MEMBERS

| GENDER DISTRIBUTION | |
|---------------------|----------------|
| MALE | 1,766 (68.45%) |
| FEMALE | 814 (31.55%) |

[CLICK HERE FOR CUMULATIVE MEMBERSHIP DATA](#)

| | |
|---------------------------------|-------|
| TOTAL FAMILY UNIT MEMBERS | 1,815 |
| FAMILY MEMBERS PAYING HALF DUES | 1,244 |